




THROWINGstars
JEWELRY BY AMY LEFF

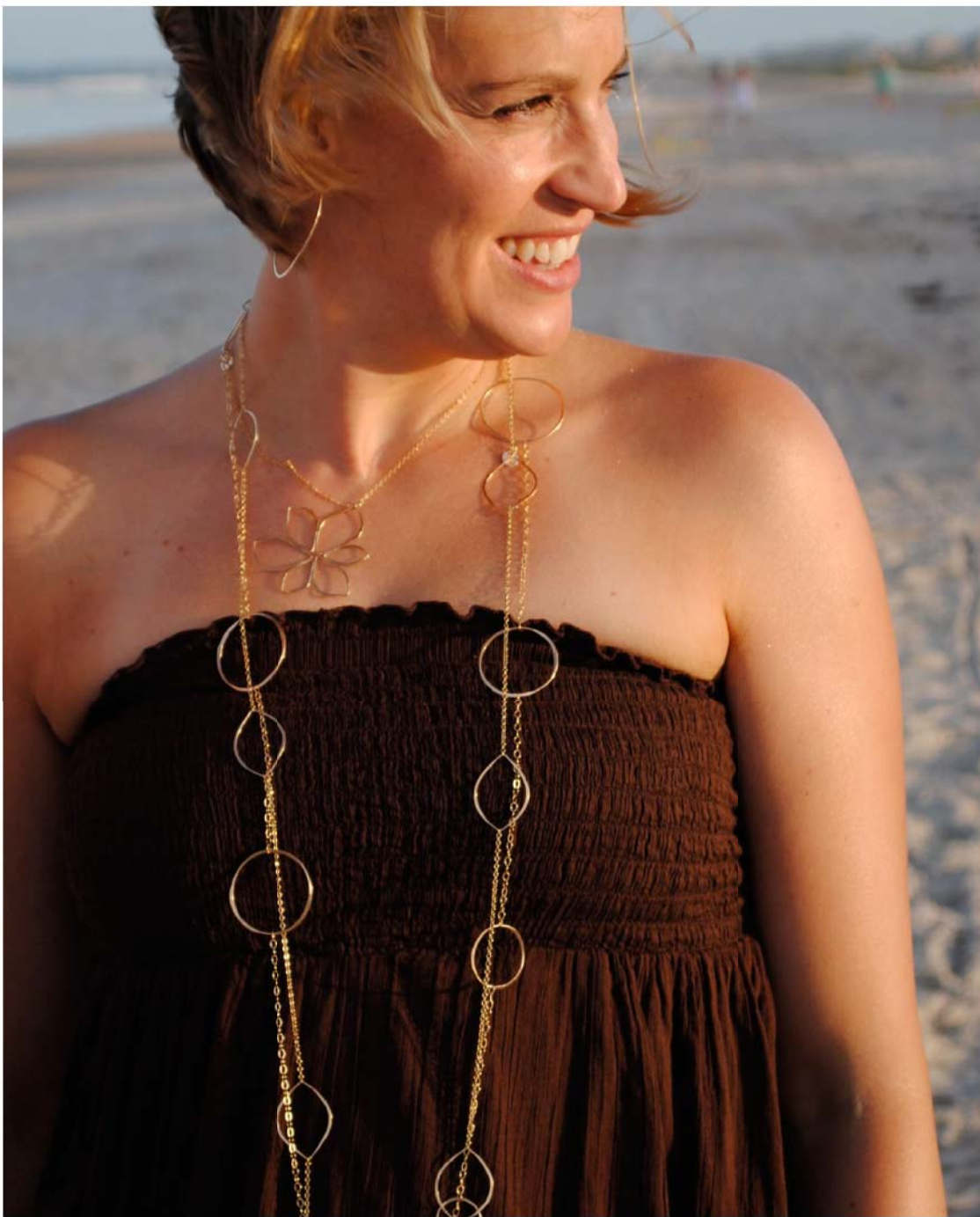
Fall | Winter 2010-2011

Throwing Stars Jewelry
By Amy Leff

Suggested Retail



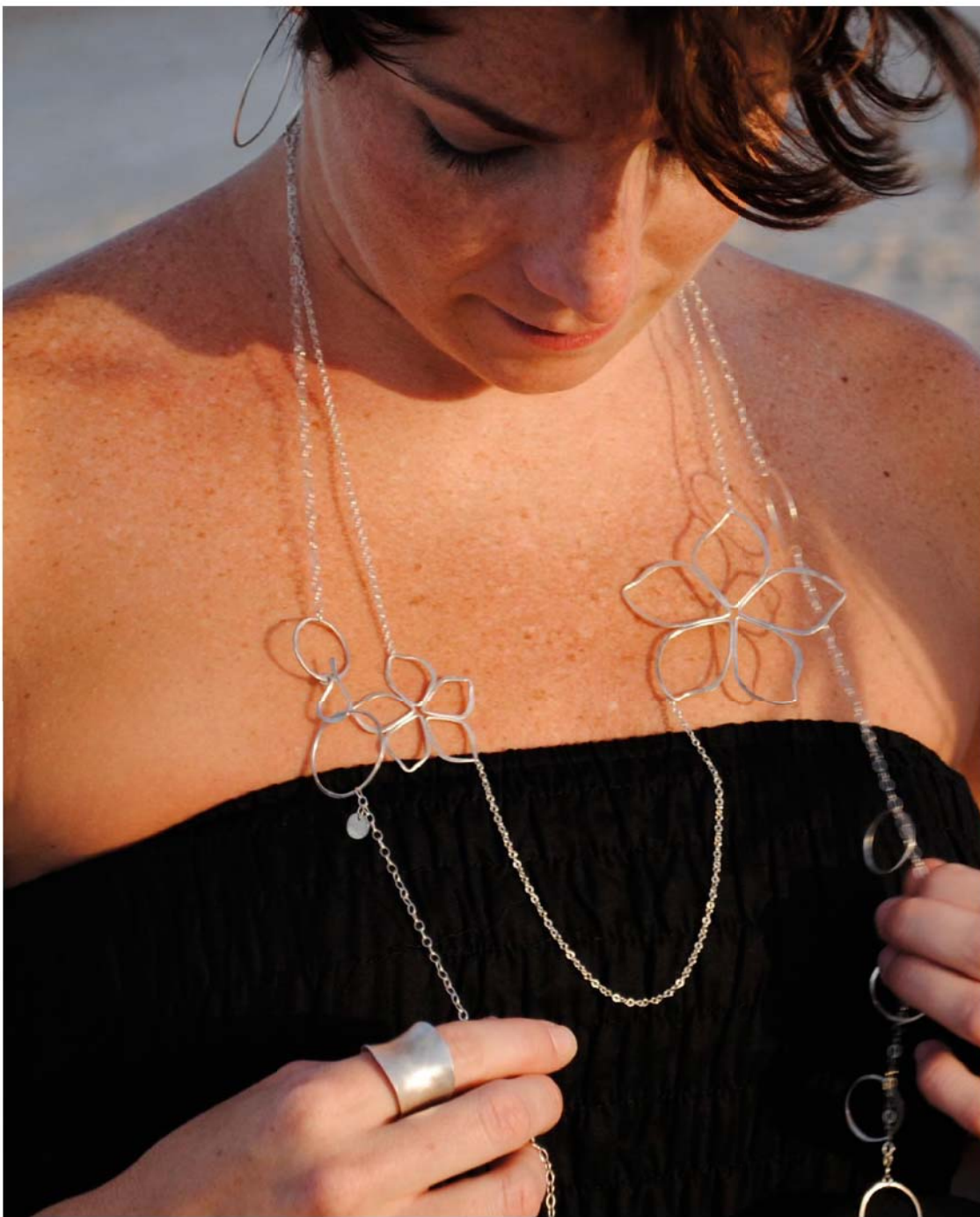
Left: Sylvia Necklace, 2-Tone \$224 | Top Right: Sylvia Necklace 2-Tone, Heather Necklace GF \$138, & Medium Copper Cuff, \$79 | Bottom Right: Olivia 2-Tone Earrings \$88, Sideways Cross Necklace, SS \$64 & GF \$68



Left: Daffodil Flower Necklace, SS \$96 & GF \$98, Heather Necklace, SS \$138 & GF \$142, & Jesse's Girl Necklace, SS \$138 & GF \$142 | Top Right: Daffodil Flower Necklace | Bottom Right: Daffodil Flower Earrings, SS \$96 & GF \$98 (see pg. 32)



Adjustable Flower Lariat, SS \$150 & GF \$154 | Top Right: Clip On Hoop Earrings, SS \$68 & GF \$72, & Debbie Cuff Ring, SS \$74 (see pg. 44)



Left: Adjustable Flower Lariat, SS \$150, Rose Necklace SS \$140 & GF \$148, Debbie Cuff Ring, SS \$74 |
Top Right: Rose Necklace | Bottom Right: Debbie Cuff Ring



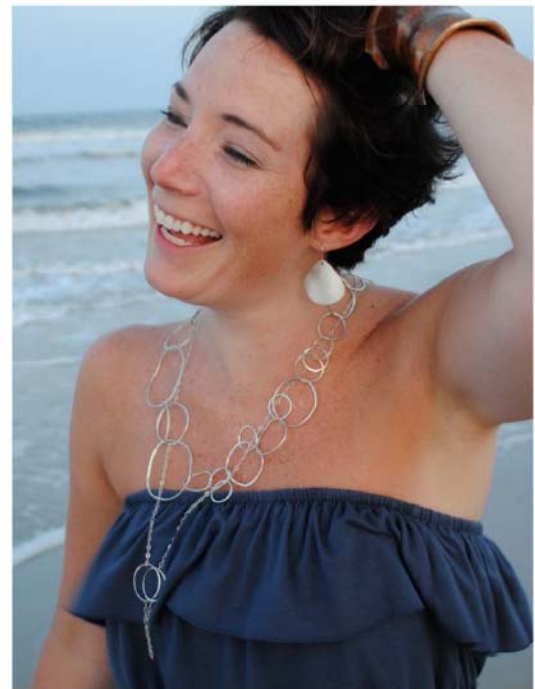
Left: Eleanor Necklace, 2-Tone \$198, & Debbie Cuff Ring, GF \$84 (see pg. 44) | Top Right: Lexi Earrings, 2-Tone \$88



Top Left: Crescent Moon Necklace, SS \$110 & GF \$116 Shabby Chic Necklaces, \$78, & Sideways Cross Necklace, GF \$68 | Top Right & Bottom Left: Shabby Chic Necklace | Bottom Right: Crescent Moon Necklace



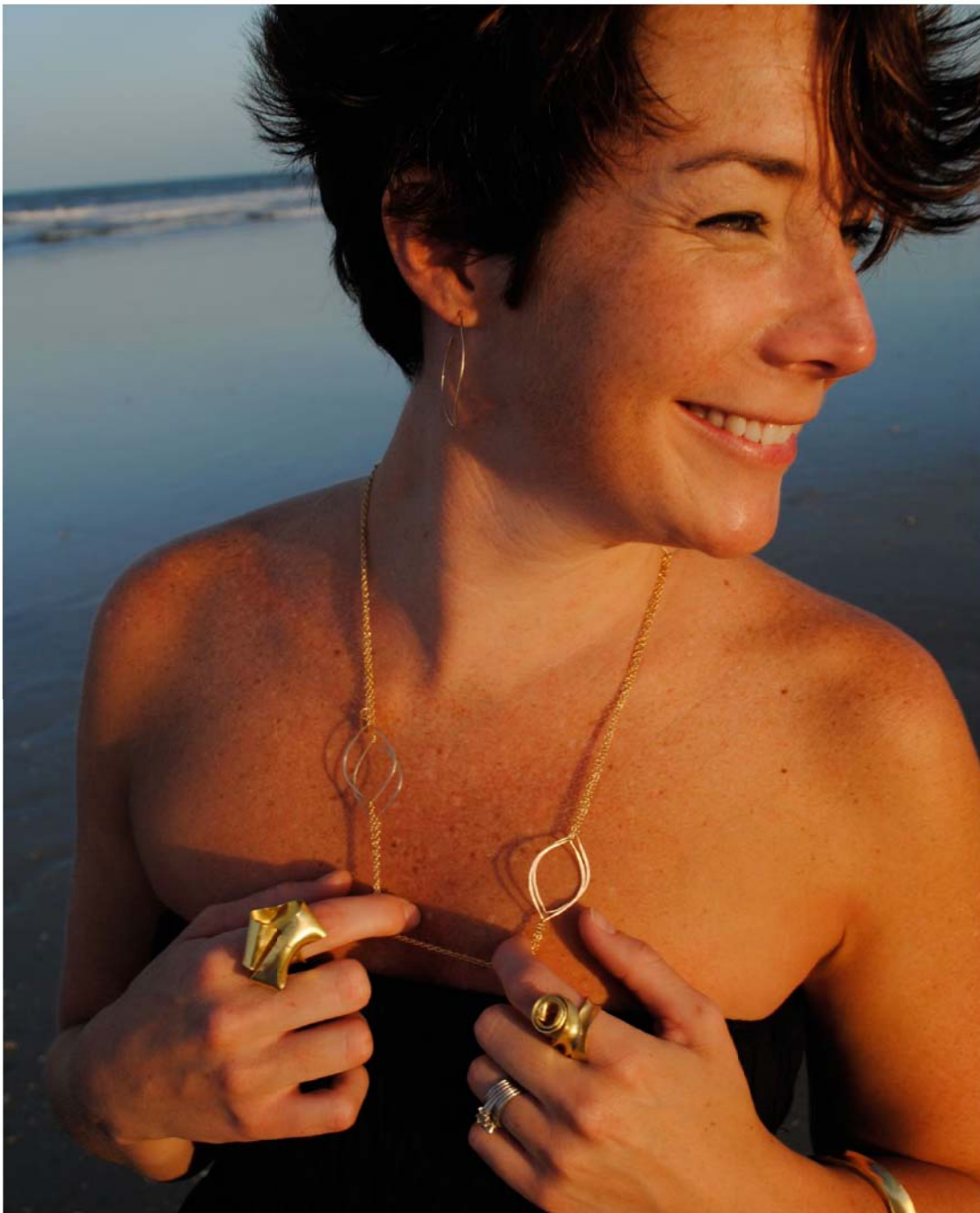
Intertwined Harmony Necklace, SS \$178 & GF \$182, Debbie Cuff Ring, SS \$74 (see pg. 44)



Left: Katherine Necklace, SS \$226 & GF \$250 | Top Right: Katherine Necklace & Jesse's Girl Necklace, SS \$150 & GF \$154 | Bottom Right: Guitar Pick Earrings, SS \$94 & GF \$98 (see pg. 20)



Top Left: Dove Necklace, SS 60 & GF \$64 | Top Right: Dove Necklace (left), Sideways Cross Necklace
| Bottom Left: Ribbon Ring, Brass \$78 (see pg. 48) | Bottom Right: Sideways Cross Necklace & Sideways Star of
David Necklace, SS \$64 & GF \$68



Heather Adjustable Necklace, SS \$126 & GF \$132 | Ribbon Ring, Brass \$78 (see pg. 43) | Small Leaf Hoops, SS \$46 & GF \$48 (see pg. 28)



Left: Tree Leaves Necklace, SS \$130 | Top Right: Tree Leaves Necklace, GF \$140 | Bottom Right: Custom Family Tree Necklace w/ 3 Leaves, SS \$130 & GF \$140



Left: Small Square Necklace, SS \$36 & GF \$38 | Small Circle Necklace, SS \$36 & GF \$38 | Top Right: Orbit Necklace, SS \$50 & GF \$54 | Bottom Right: Square Dance Necklace, 2-Tone \$64



Left: Perfect Match Necklace, 2-Tone \$56 | Top Right: Gen Necklace, 2-Tone \$110 | Bottom Right: Leigh Necklace, 2-Tone \$132



Left: Small Floating Rings Necklace, 2-Tone \$138 | Top Right: 5 Floating Rings Necklace, SS \$148 & GF \$158 | Bottom Right: Floating Rings 42" Adjustable Necklace, SS \$168 & GF \$178



Left: Organized Chaos Necklace 50", 2-Tone \$328 | Top Right: Donna 42" Necklace in GF \$328
| Bottom Right: Donna 42" Necklace, SS \$300



Left: Sasha Necklace, SS \$130 & GF \$136 | Right: Family of 4 Necklace, SS \$110 & GF \$116



Fallen Leaves Necklace on a 30" Chain, SS \$130 & GF \$136 | Right: Leaf Necklace, SS \$50 & GF \$54



Personalized Name Necklace, SS \$78 & GF \$80



Initial Pendant Necklace, SS \$64 & GF \$68



Guitar Pick Necklace, SS \$74 & GF \$78, & Guitar Pick Earrings, SS \$94 & GF \$98



Large & Brilliant Brushed Leaf Earrings, Brass \$78



Left: Small Brushed Leaf Earrings, SS \$74 & GF \$78 | Right: Large Brushed Leaf Earrings, SS \$94 & GF \$98 with Small Brushed Leaf Earrings



Left: 3's Company Earrings, SS \$66 & GF \$68 | Right: Keep it Simple Earrings, Small, SS \$18 & GF \$20, and Medium, SS \$26 & GF \$28



Left: Shoshana Earrings, 2-Tone \$88 | Top Right: Sylvia Earrings, 2-Tone \$74 | Bottom Right: Circles (x2) Earrings, SS \$66 & GF \$70



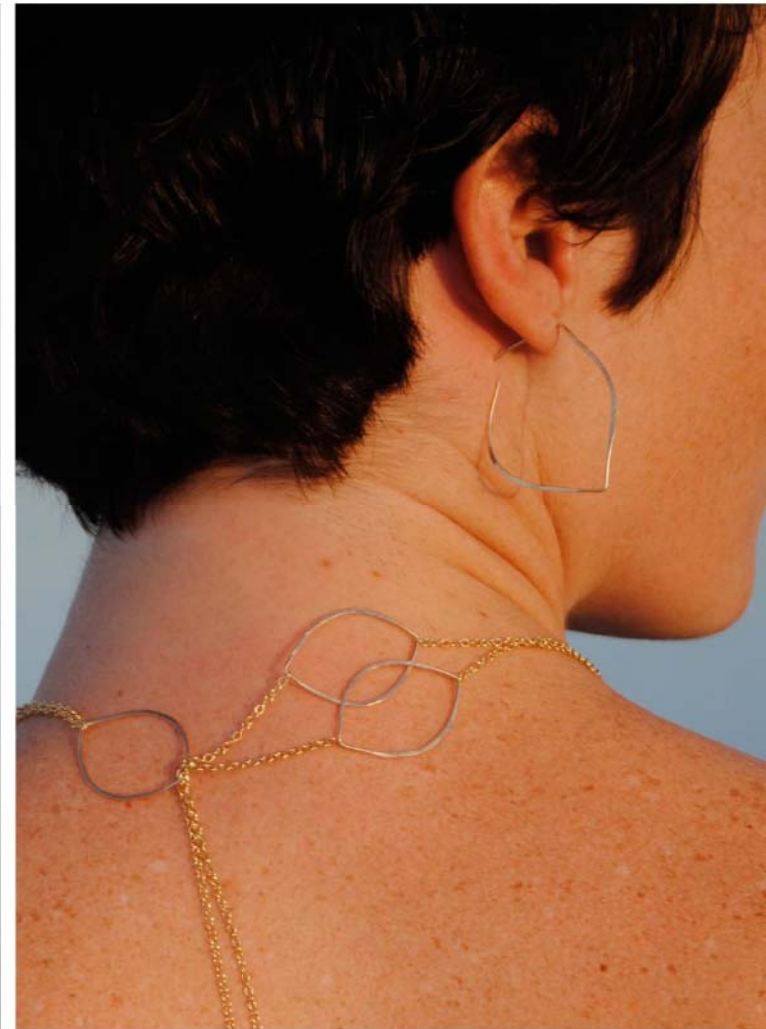
Top Middle: Hooked on You Earrings, 2-Tone \$68 | Left: Large Angelle Earrings, 2-Tone \$88
| Bottom Right: Angelle Knotted Earrings, SS \$64 & GF \$68



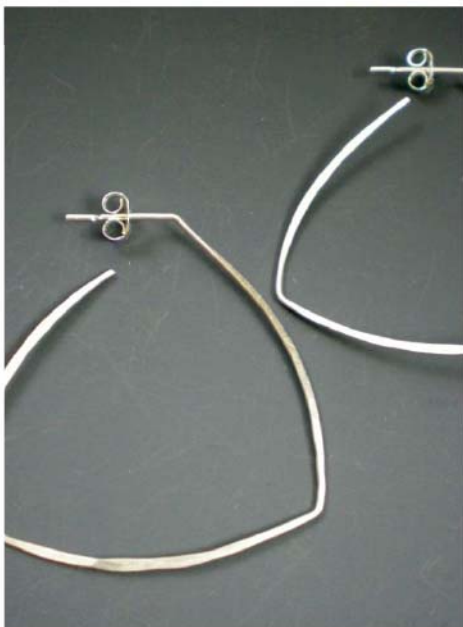
Left: Bezel Earrings, 2-Tone \$78 | Top Right: Bezel Twist Earrings, SS \$66 & GF \$70 | Bottom Right: Bezel Twisted and Wrapped w/ Chain Earrings, SS \$78 & GF \$80



Left: Claire Earrings, SS \$74 & GF \$78 | Right: Olivia Earrings, SS \$66 & GF \$70



Left: Large Leaf Hoops, SS \$50 & GF \$54 | Right: Small Leaf Hoops, SS \$46 & GF \$48, and Heather Necklace, SS 126 & GF \$132 (see pg. 10)



Top Middle: Donna Hoops, SS \$50 & GF \$54 | Bottom Left: Trilliant Brilliant Hoops, SS \$50 & GF \$54
| Bottom Right: Square Hoops, SS \$50 & GF \$54



Left: Clip-On Hoop Earrings, SS \$68 & GF \$72 | Barbara Hoops, 2-Tone \$68



Left: Sandy Earrings, SS \$78 & GF \$80, Shabby Chic Necklace, \$78 (see pg. 6) | Top Right: Sandy Earrings, SS \$78 & GF \$80 | Bottom Right: Jaime Earrings, SS \$66 & GF \$70



Top Left: Daffodil Earrings, SS \$96 & GF \$98 (see pg. 2) | Top Right: Forget-Me-Not Earrings, SS \$74 & GF \$78 | Bottom Left: Long Twinkle Twinkle Earrings, SS \$74 & GF \$78 | Bottom Right: Short Twinkle Twinkle Earrings, SS \$74 & GF \$78



Top Left: Infinity Earrings, SS \$50 & GF \$54 | Bottom Left: 2 Diamond Drops, SS \$64 & GF \$68
| Right: 3 Diamond Drops, 2-Tone \$78



Left: Lexi 2-Tone Earrings, 2-Tone \$88 | Right: Lexi Earrings, SS \$84 & GF \$88



Left: 3 Leaves Drops, SS \$66 & GF \$68 | Top Right: Small Hope Earrings, SS \$74 & GF \$78
| Bottom Right: Medium Hope Earrings, SS \$78 & GF \$80



Left: Winter Nights Earrings w/ Smokey Quartz, SS \$78 & GF \$80 | Top Right: Summer Days Earrings w/ Rose Quartz, Pink Topaz, & Citrine, SS \$110 & GF \$118 | Bottom Right: Penny Earrings, SS \$74 & GF \$80



Left: Sm. Wrapped Up Earrings w/ Labororite, SS \$68 & GF \$70 | Right: Half Wrapped Earrings w/ Rock Crystal & Amazonite, SS \$68 & GF \$70



Crystal Clear Earrings, SS \$48 & GF \$50



Left: Large Harriet Earrings w/ Green Agate, SS \$52 & GF \$56 | Top Right: Medium Harriet Earrings w/ Yellow Agate, SS \$40 & GF \$42 | Bottom Right: Large Harriet Earrings w/ Horn, SS \$52 & GF \$56



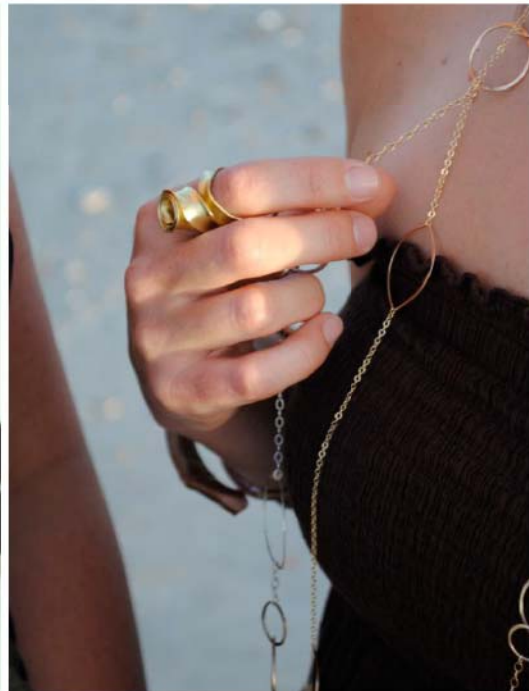
Left: Angelle Bracelets: SS \$80 & GF \$86 | Top Right: Angelle Rings, SS \$46 & GF 54 | Bottom Right: Angelle Ring, 2-Tone \$76



Top Left: Shabammy Cuff, Brass \$198 | Top Right: Shabammy Cuff, Copper \$198 | Medium Copper Cuff w/ Green Patina \$79 (see pg. 1), & Copper Wrap Bracelet, \$79 | Bottom Left: Lg Copper Cuff \$89, GF Cuff \$250, SS Cuff \$150 | | Bottom Right: Sm Silver Cuff \$80, Med Silver Cuff \$100



Left: Ribbon & Rose Rings, Brass & Copper \$78 | Right: Rose Ring, Copper \$78



Top Left: Ribbon Ring, Brass \$78 & Wrap Bracelet Brass, \$78 | Top Right: Wrap Bracelet, Brass \$78
| Bottom Left: Rose Ring, Brass \$78 | Bottom Right: Rose Ring & Heather Necklace (see pg. 10)



Top Middle: Debbie Cuff Ring, SS \$74 & GF \$84 | Bottom Left: Debbie Cuff Ring, Copper \$64
| Bottom Right: Floating Bands, SS & GF \$128, and Brass & SS \$98



Fall | Winter 2010-2011

Throwing Stars Jewelry By Amy Leff
Amy@ThrowingStarsJewelry.com p:404.791.5554
Hope@ThrowingStarsJewelry.com p:404.539.0256